



# *The Chermont Collection*

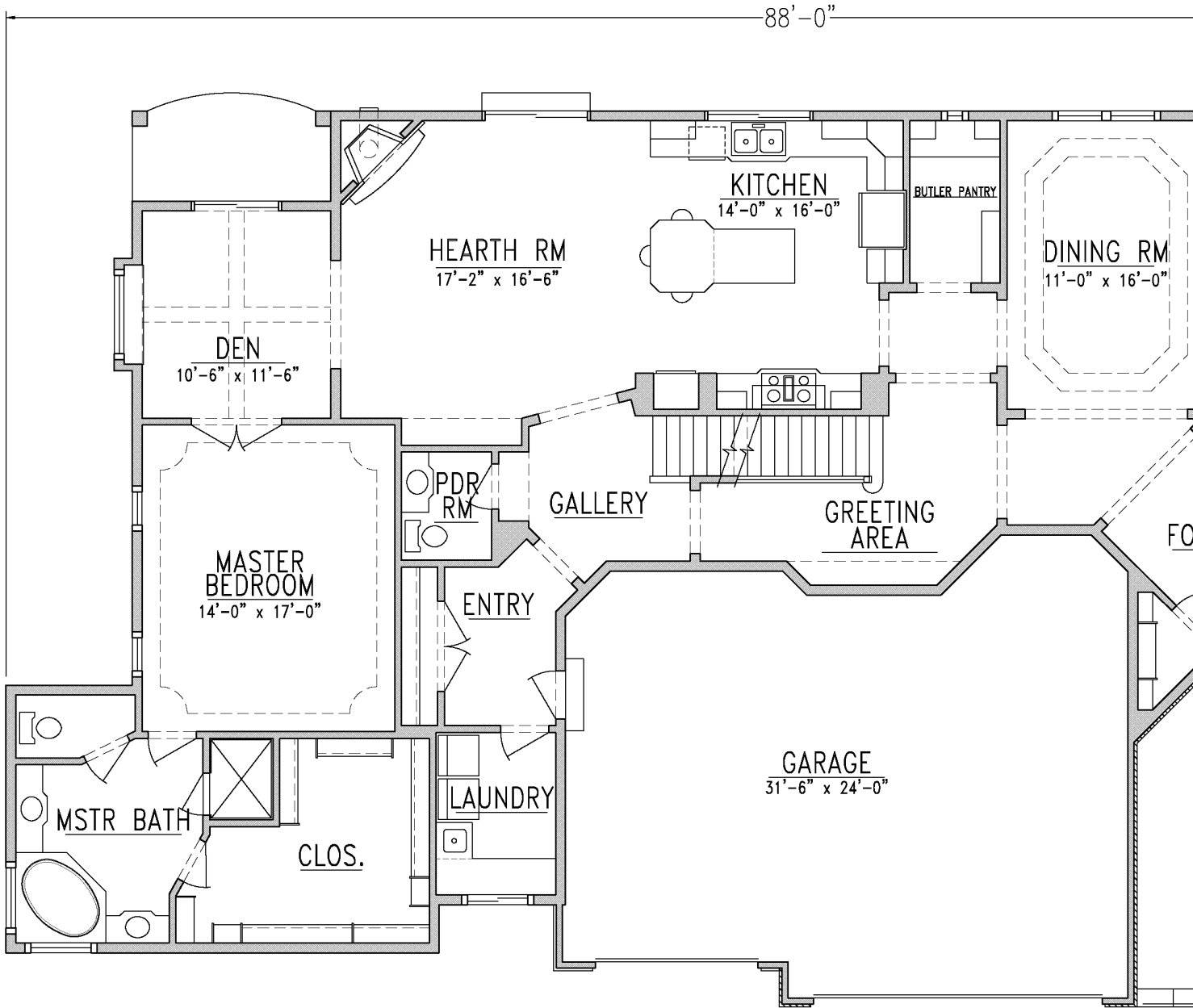


*Chermont — 3,090 sq. ft.—First Floor Master Bedroom Suite*

Kings Way Homes has earned a solid reputation for state-of-the-art designs, stunning architectural details and customized features uniquely tailored for each of our clients. Imagine, your home, an exquisite blend of impeccable design and unsurpassed elegance, constructed with the finest building materials and the most skillful craftsmanship. A home that comes along once in a lifetime for those who strive to make their dreams a reality.

We invite you to start the process—begin with the *Chermont* floor plan, add the inspiration of your dreams, and allow us to help you turn your dream home into reality. Experience the Kings Way difference—extraordinary design, superb craftsmanship, exceptional customer service and superior value . . .

*Building Dreams and Memories for More Than 35 Years*

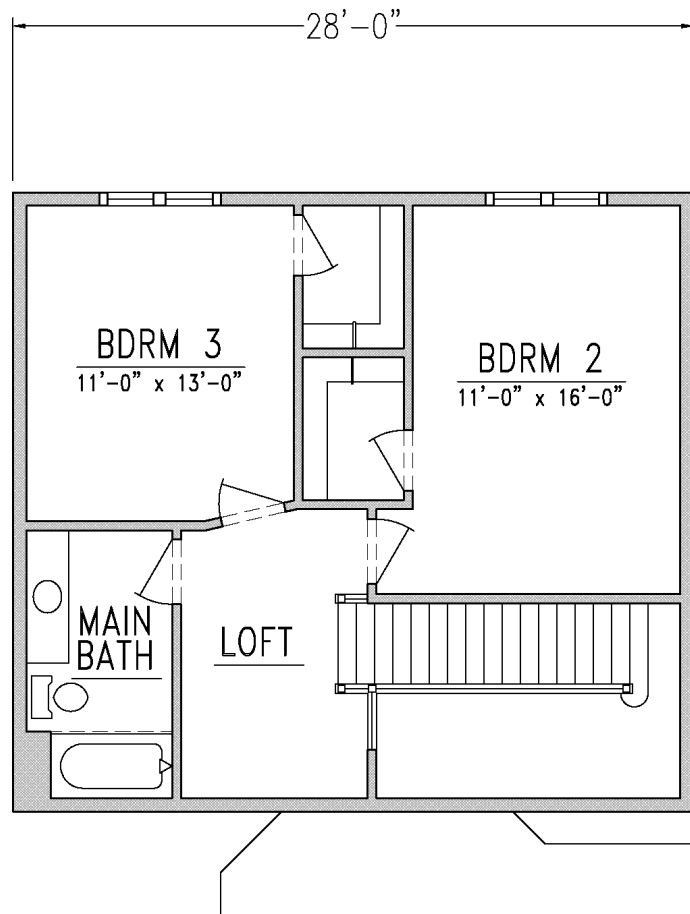
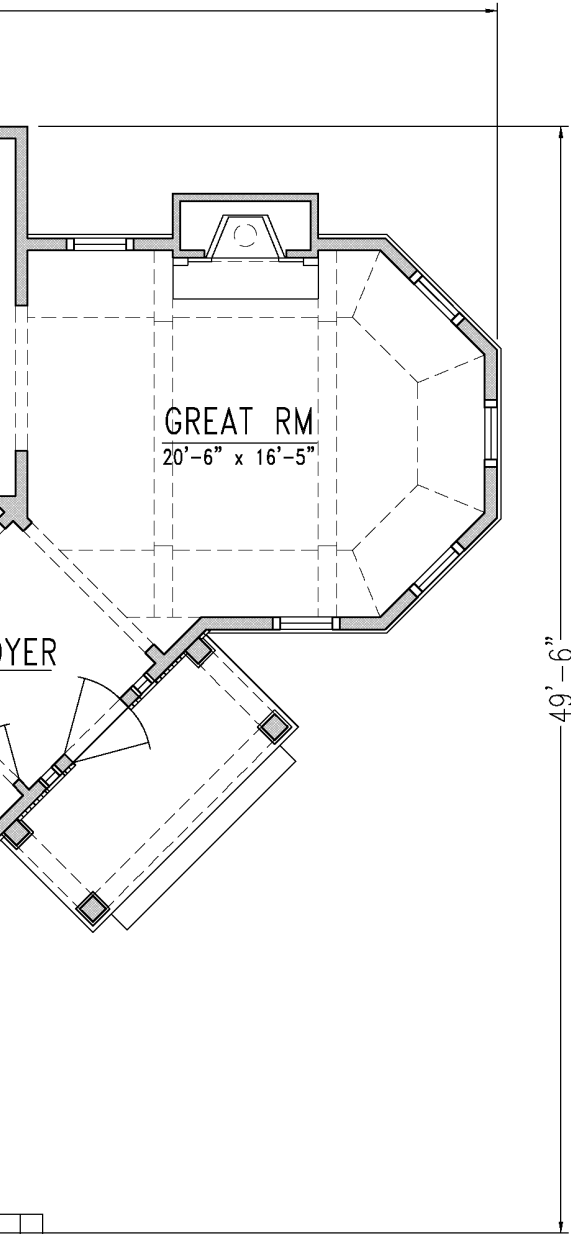


CHERMONT — FIRST FLOOR PLAN  
2,492 sq. ft.

\$ \_\_\_\_\_  
Chermont — Base Price  
Excluding Lot, Site Improvements & Decorating

# The Chermont

3,090 sq. ft.



## CHERMONT — SECOND FLOOR PLAN

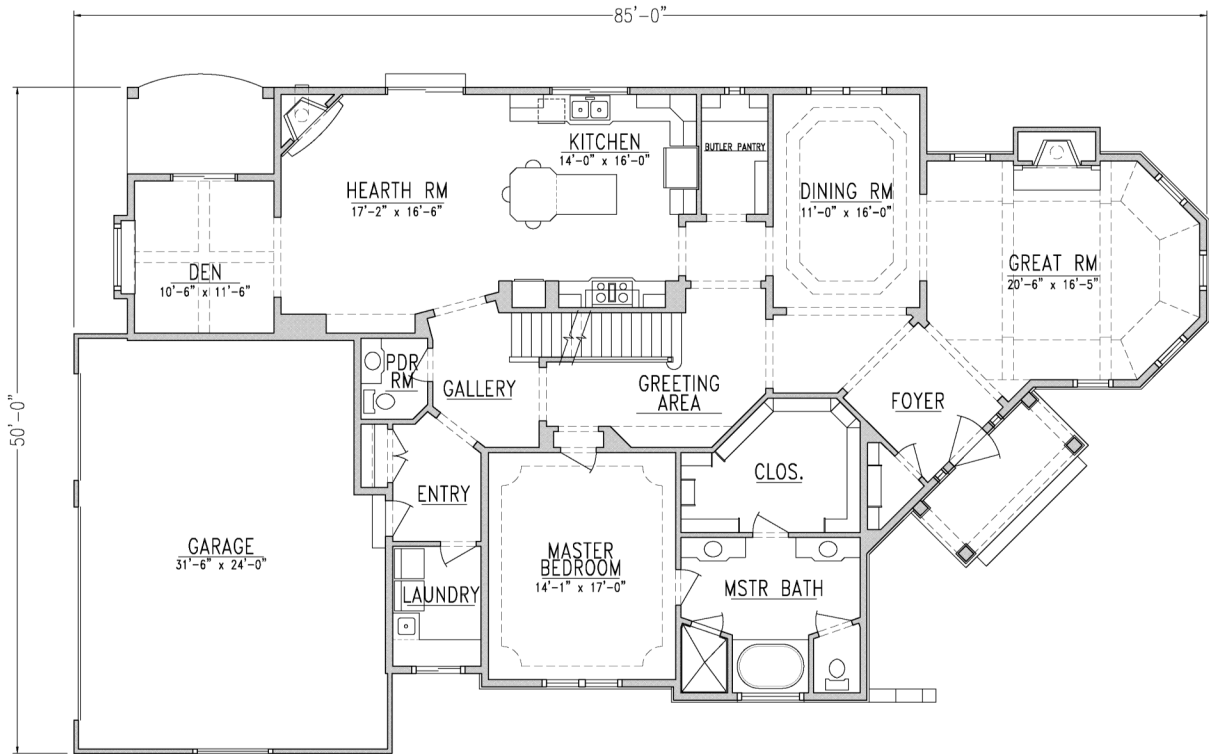
598 sq. ft.



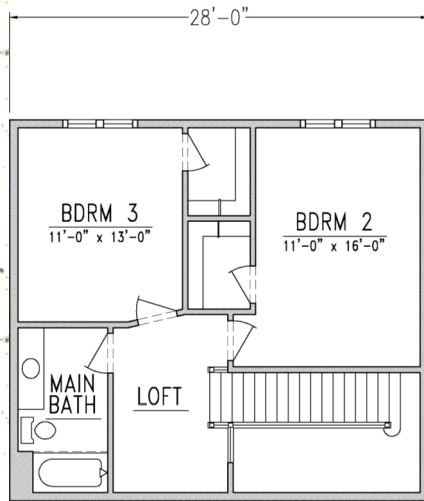
Note: This plan constitutes the legal property of Kings Way Homes ("Builder"), and the use or copy of these plans or the creation of any derivative thereof without the express written consent of Builder is strictly prohibited and constitutes a violation of Builder's proprietary and/or copyright rights. All dimensions are interior, approximate and subject to change at Builder's discretion. Rev. 11-2008



*Chermont— 3,090 sq. ft.—First Floor Master Bedroom Suite—Side Entry Garage*



CHERMONT Side Entry Garage — First Floor Plan  
2,492 sq. ft.



CHERMONT — Second Floor Plan  
598 sq. ft.

*Kings Way Homes, LLC*  
 700 Pilgrim Parkway  
 Elm Grove, WI 53122  
 262.797.3636  
 www.kingswayhomes.com

