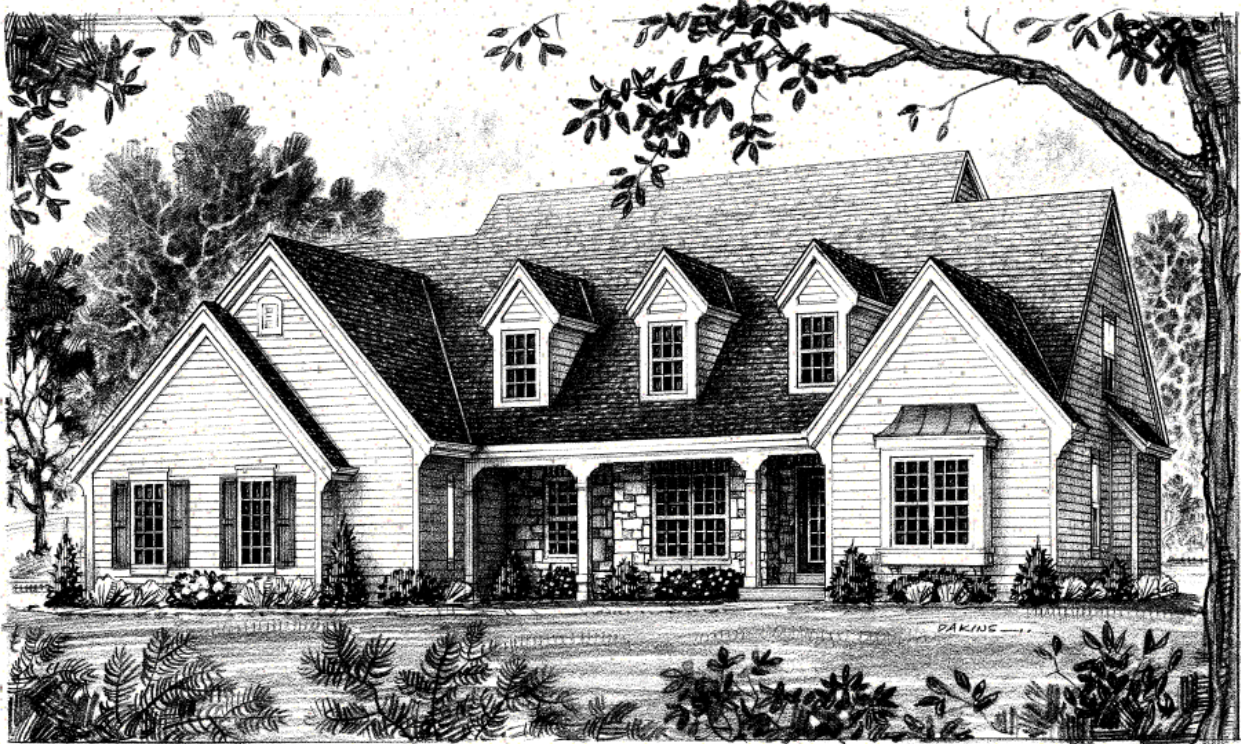




The French Cape



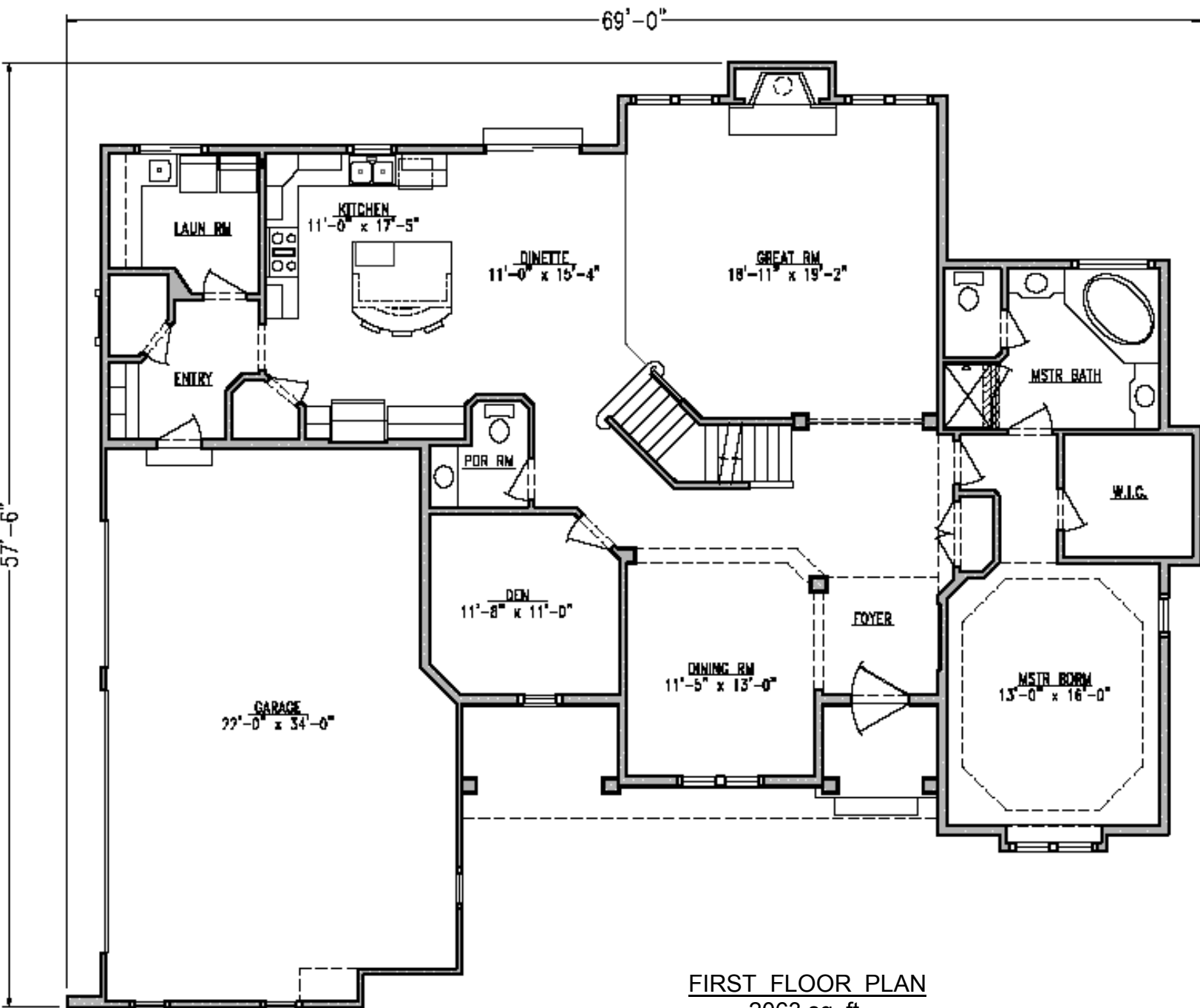
2,943 sq.—First Floor Master Bedroom Suite

Kings Way Homes has earned a solid reputation for state-of-the-art designs, stunning architectural details and customized features, uniquely tailored for each of our clients. Imagine, your home, an exquisite blend of impeccable design and unsurpassed elegance, constructed with the finest building materials and the most skillful craftsmanship. A home that comes along once in a lifetime to those who strive to make their dreams a reality.

We invite you to start the process—begin with the *French Cape* floor plan, add the inspiration of your dreams, and allow us to help you turn your dream home into reality. Experience the Kings Way difference—extraordinary design, superb craftsmanship, exceptional customer service and superior value . . .

Building Dreams and Memories for More Than 35 Years





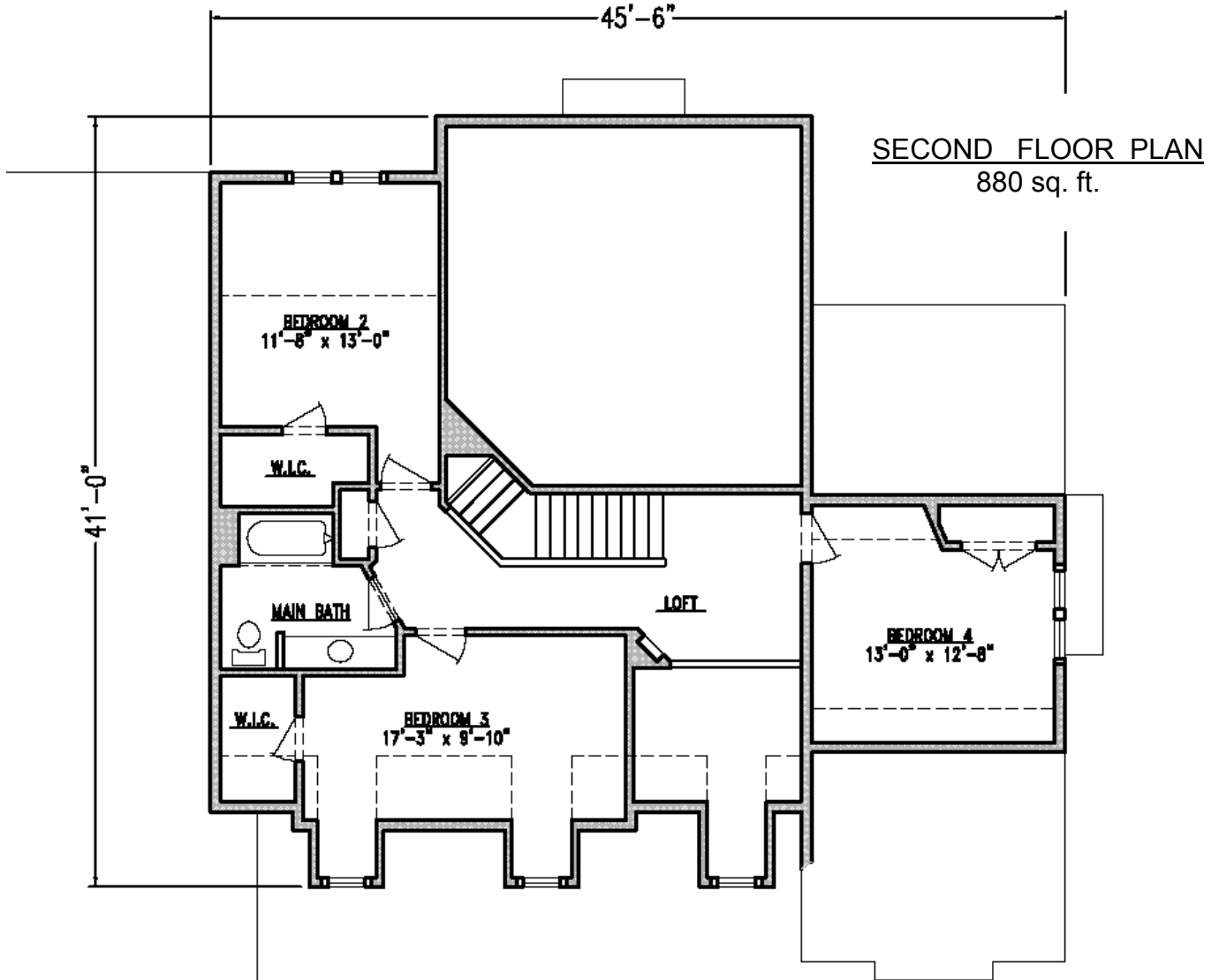
Kings Way Standard Features

- *Kings Way Strong Wall™ Construction*
- *Kolbe® High Efficiency Windows*
- *Custom birch or rustic cherry cabinets*
- *Premium Kohler plumbing fixtures and faucets*
- *Tyvek® Home Wrap & Flashing Weatherization System*
- *Zodiaq® or granite countertops*
- *Custom Closet Systems*



The French Cape

2,943 sq. ft.



\$ _____
 Base Price
 Excluding Lot, Site Improvements & Decorating



Note: This plan constitutes the legal property of Kings Way Homes, and the use or copy of these plans or the creation of any derivative thereof without the express written consent of Builder is strictly prohibited and constitutes a violation of Builder's proprietary and/or copyright rights. Copyright 2000 Kings Way Homes. All Rights Reserved. All dimensions are interior, approximate and subject to change at builder's discretion. Rev. 12-2008

Welcome

To The Kings Way Family of Home Building Companies



Kings Way Homes was founded by Bill Baesemann in 1972 with the mission of offering well designed, superbly crafted homes at an outstanding value. Over the past 36 years, Kings Way has constructed thousands of homes and has become one of the most respected home builders in southeastern Wisconsin, winning more prestigious Parade of Homes awards than any other builder. During this time, Kings Way has solidified a strong relationship with the areas best tradesmen and building suppliers.

Kings Way has evolved into a family of home building companies and related enterprises all operating under the umbrella of Kings Way Holding Company, which now includes:

Kettle Creek Homes, constructing semi-custom homes with base prices starting around \$150,000;

Kings Way Homes, constructing semi-custom to custom homes with base prices starting around \$275,000;

Homes by Chapel Hill constructing complete custom homes starting around \$750,000;

Kings Way Realty, operating a real estate brokerage company engaged in selling all of Kings Way's new construction products;

Kings Way Renovations, performing home remodeling projects ranging from \$30,000 to over \$200,000;

Homolka Designs, providing single and multi-family residential design services and including the design of all Kings Way product; and

Kings Way Land Development Ventures, developing numerous single-family subdivisions.

The Company's headquarters are located in Elm Grove, Wisconsin where it houses its corporate offices, sales center and Design Studio. The Company also produces its own television show aired Sunday mornings at 10:30 am on WTMJ-4 (NBC station), which takes viewers, step-by-step, through the construction of a new Kings Way or Kettle Creek home.

Kings Way continues to grow as an industry leader in design, construction and promotion of quality single-family homes and home sites, and fortify its impeccable reputation with customers, building trades and home building associations. Each of the home building companies showcases fully decorated and furnished model homes for viewing, so please ask one of our New Construction Specialists for current model locations, hours of operation and sale information.

Kings Way Homes, LLC
700 Pilgrim Parkway
Elm Grove, WI 53122
262.797.3636
www.KingsWayHomes.com

